

## Anti-*Staph* Enterotoxin B (SEB) Chimeric mAb (918)

**Catalog #:** 0221-009

**Lot #:** 2307002

**Immunogen:** Staphylococcus Enterotoxin B (SEB).

**Description:** Human monoclonal antibody reactive to *Staphylococcus aureus* Enterotoxin B.

**Supplied:** 100  $\mu\text{g}$  is supplied in PBS at a concentration of 2.740 mg/mL.

**Purification:** Antibody is purified using immobilized protein A/G.

**Clonality:** Monoclonal of the human IgG<sub>1</sub> isotype.

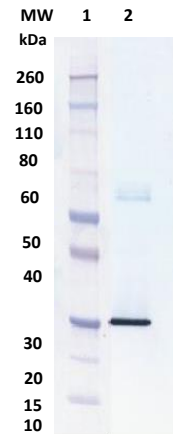
**Storage:** 2-3 weeks +4°C, -80°C long term

**Recommended Dilutions:**

**WB:** This antibody can be utilized for detection at a concentration of 1.0  $\mu\text{g}/\text{mL}$ .

**ELISA:** Assay-dependent dilution. The antibody can be used as primary antibody against SEB in a capture ELISA assay and Western blot detection.

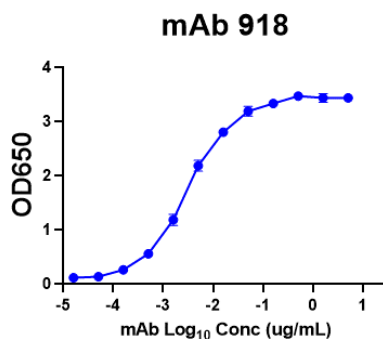
### Western Blot Data:



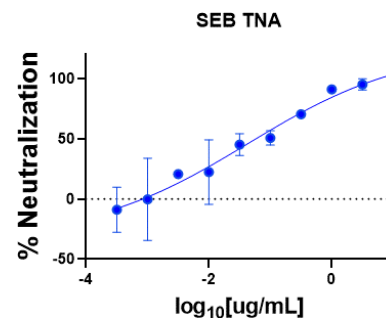
**Western Blot Detection:** 300ng (lane 2) of *S. aureus* Enterotoxin B (SEB) was loaded and detected with Human anti-*Staph* Enterotoxin B mAb (918) at 1.0  $\mu\text{g}/\text{mL}$ , a goat anti-Human IgG-HRP conjugate and TMB substrate (lanes 1 and 2). Lane 1 denotes Novex® Sharp prestained protein marker.

**Neutralization:** Dose dependent neutralization of SEB-induced IFN- $\gamma$  production in human peripheral mononuclear cells (PBMC).

### ELISA Data:



### Toxin Neutralization Data:



Intended for research use only, not for human, therapeutic, or diagnostic applications. The buyer cannot sell or otherwise transfer this product for Commercial Purposes without written approval of EliteImmune.

Copyright 2023. EliteImmune, Inc. All rights reserved.