

Human anti-Staph Enterotoxin A (SEA) mAb (514)

Catalog Number: S200-006

Lot: 2204004

Concentration: 100 µg is supplied in PBS at a concentration of 1.868 mg/mL.

Description: *Staphylococcus aureus* (*S. aureus*) is a Gram-positive bacterium that colonizes humans and domestic animals. *S. aureus* produces over 20 different enterotoxins, of which Enterotoxin A and B (SEB and SEA) are the most well characterized and also regarded as superantigens due to their ability to bind to MHC class II alpha and beta chains. SEA is the most common toxin associated with staph food poisoning. Eliteimmune's SEA targeting mAb 514 can be used in toxin neutralization assays (TNA) and is also a useful research tool for ELISAs and western blots.

Product Type: Monoclonal Antibody IgG1 subtype

Strain: *Staphylococcus aureus*

Synonyms: Enterotoxin A, SEA, Staphylococcal enterotoxin A, superantigen A, superantigen

Expression Host: CHO

Tag: None

Purity: Antibody is purified using immobilized protein G.

Applications: ELISA, Western Blot, SDS-PAGE, toxin neutralization assays (TNA). Specific conditions should be optimized by end user.

Formulation: PBS

Storage: 4°C for immediate use, -80°C for long-term storage. Avoid repeated freeze thaw cycles.

Shipped: Dry Ice

Intended Use: For research use only. Not intended for human, therapeutic, or diagnostic use. Buyer may not modify, sell, or transfer product for commercial use without written permission from Eliteimmune.

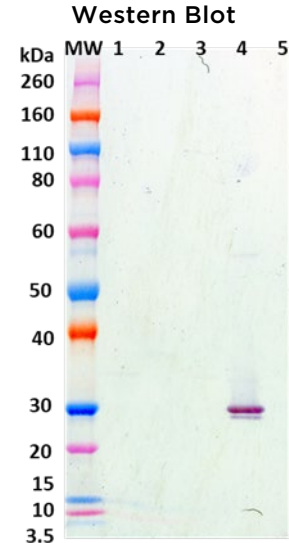
Recommended Dilutions:

ELISA: Assay-dependent dilution. The antibody can be used for capture of SEA in an indirect ELISA assay and Western blot detection.

WB: Suggested use dilution of 0.50 µg/mL

Neutralization: Assay-dependent dilution

Cross Reactivity: This antibody does not appear to cross react with *S. aureus* antigens Hla, LukF, LukS, or SEB, at the tested concentrations.



Western blot detection of Hla (lane 1), LukF (lane 2), LukS (lane 3), SEA (lane 4) and SEB (lane 5), 200ng each. SEA was detected with monoclonal antibody 514 at 0.50 µg/mL and an anti-human IgG-HRP conjugate.

ng/mL	OD 650 nm				
	Hla	LukF	LukS	SEA	SEB
100.000	0.107	0.095	0.116	3.644	0.086
10.000	0.090	0.081	0.091	3.559	0.086
1.000	0.101	0.075	0.080	3.647	0.081
0.100	0.085	0.072	0.087	3.504	0.066
0.010	0.080	0.075	0.086	2.346	0.081
0.001	0.083	0.082	0.075	0.530	0.080
0.000	0.088	0.072	0.076	0.150	0.084
0.000	0.094	0.067	0.077	0.106	0.086

S. aureus antigens were diluted to 2 µg/mL in PBS for plate coating. Anti-SEA antibody 514 was serially diluted ten-fold from 100 µg/mL and incubated on the coated plates. Washed plates were detected with anti-human IgG-HRP conjugate and TMB substrate. OD650 is reported above.